

Bauwelt 建筑世界 4.2007

次自然 Second Nature

景观设计新概念
New Concepts for Landscape

► p 2

建筑伪装 In Disguise

苍白晚期现代主义的面具
Masks and Mock-ups for Faded
Remains of Late Modernism

► p 30

城市体育馆 Urban Gyms

另类运动空间
Spots for Athletic Architecture

► p 56

八月号 August 2007

“他将庸俗贵族化，将奢华庸俗化；他使用赝品、布景与特效，与欧斯曼、拿破仑三世、文物保护工作者以及他富有的业主玩起了捉迷藏。”

“He refines trash elements and turns luxury into junk; he works with dummies, sceneries and effects; he plays hide-and-seek and blind man’s bluff with Baron Haussmann, Napoléon III, the curators of listed buildings, and his wealthy clients.”

建筑伪装 In Disguise ▶ p 50

次自然 SECOND NATURE

- 2 车站广场，高根泽町
Chokkura Plaza, Takanezawa
- 10 停车楼上的公园，巴塞罗那
Park on top of a Bus Depot, Barcelona
- 16 A8ernA 广场，赞斯塔德
A8ernA, Zaanstad
- 24 公共游泳场，南蒂罗尔州
Public Bath, South Tyrol

建筑伪装 IN DISGUISE

- 30 黑森州国家剧院，达姆施塔特
Hessian State Theater, Darmstadt
- 38 布兰德住宅，列支敦士登
House Brendle, Liechtenstein
- 44 X 博物馆，明兴格拉德巴赫
Museum X, Mönchengladbach
- 50 福柯酒店，巴黎
Fouquet's Barrière, Paris

城市体育馆 URBAN GYMS

- 56 体育馆，格兰诺布尔
Sports Hall, Grenoble
- 60 体育文化中心，哥本哈根
Sports and Culture Center, Copenhagen
- 64 马丁斯堡学校体育馆，巴登州
Martinsberg School Gym, Baden

竞赛 COMPETITIONS

- 68 政府区，的黎波里
Government District, Tripoli
- 80 爱乐音乐厅，巴黎
Philharmonic Hall, Paris
- 84 火线纪念碑，鹿特丹
Brandgrens, Rotterdam
- 86 西里西亚博物馆，卡托维兹
Silesian Museum, Katowice

封面：

巴黎福柯酒店内院立面铝制树枝

Cover:

Structure of aluminium branches on the inner courtyard facade of the Hotel Fouquet's Barrière, Paris

马丁堡学校体育馆, 巴登

建筑师: Burkard Meyer, Baden/CH

评论: Karin Gimmi 摄影: Roger Frei

有着两个两用体育馆的新运动场被埋入山坡中。粗大的柱子赋予了体育馆以庄严的氛围。
小图: 首层室外运动场。

总平面图 1:5000

The new sports facility digs deep into the slope. Giant lines of supports give a grand atmosphere to the building. Small photo: Outdoor sports field at ground-floor level.

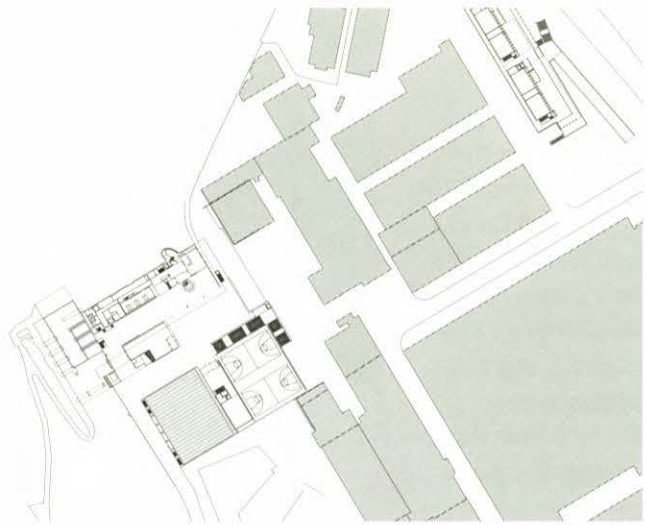
Site plan 1:5000

马丁堡山上的透平机工厂BBC以前的社区中心在今天仍旧以它庞大的体量和纪念性给人留下了难以磨灭的印象。暂时想象自己回到了50年前,眼前即刻会出现一群穿着深色制服的工人,每天中午从山脚下的车间爬上数不尽的台阶,涌入建筑物上层食堂的一片光明中。马丁堡山上的两层楼上,每天共接待3000名工人在铺着餐布的长桌上用餐。工人福利会将国际集团 Brown Boveri & Cie(现在的ABB)的名字写到了领军旗帜上。巨大透平机和反应器的生产若没有大量人力是难以想象的。在公司所有的一栋现代社区中心内,工人们将享受现代化的卫生设施,在工厂刚刚允诺的照相工作室、业余技术课程或保龄球馆中度过闲暇时光。

BBC当时委托的建筑师 Armin Meili 寻找一种形式表达语言,塑造马丁堡建筑的不仅大,而是真正宏伟的外表。为了适应坡地地形,建筑基座被设计成一个多层的实体,供内部业务使用,确保了建筑的经济性。基座上升起一个玻璃立方体,有着突出的装饰性网格立面。里面便是雄伟的、带有标志性巨大全景窗的食堂大厅。全部使用玻璃建造的幕墙,其原型最初来自工厂厂房建筑。Meili为马丁堡创造了这一原型独一无二的变体,其玻璃框架并非采用昂贵的金属,而是用木材制成。

作为瑞士战后建筑最重要的见证者,这片1954年建成的厂区将被保存下来,并按照文物保护观点依据学校的需要进行改建。史无前例的空间尺度和立面窗框的细部都具有很高保留价值。原先的社区中心如同皇冠一般坐落在马丁堡山顶上,而旁边有着两个两用体育馆的新运动场则相反被埋入山坡中。这座建筑放置在两层的停车楼上,其外表在工业厂区中与一般20m高的裙房基座并无差异。平台上马丁堡学校入口与体育馆入口遥遥相对的位置,建筑物则只有一层高。粗大的柱列赋予了体育馆平凡的功能以一种庄严的氛围。屋顶结构延续了雕塑感,一组纵向钢梁紧挨着排列在一起。屋顶平面传达了一幅人工景观的画面,同时反映出了老社区中心主立面的力量。放在运动场和 Meili 的建筑之间的台阶贯穿了基座部分,将宽大的平台与前面的榛树林联系起来,这里也坐落着新的教学楼。





Martinsberg School Gym, Baden

Even today, the size and monumental character of the 1954 staff building of the Brown, Boveri & Cie turbine factory on the Mount Martin near Baden in Switzerland are overwhelming. Taking the steep slope situation into account, the architect, Armin Meili, had incorporated all functions of the operation in a multi-story base upon which a glass cube with a decorative filigree facade extends in vertical direction. This is where the big canteen with its enormous panoramic window is located in which 3,000 factory workers per each of the two shifts were served at set tables. Meili had developed a unique type of curtain wall for the cube where the muntin grille consisted of timber instead of expensive stainless steel or aluminium.

This listed complex was to be preserved and redesigned to meet the needs of a school. The unique spatial changes in scale and the refined details were to be kept. While the staff building sits on the hill like a crown, the new sports facility including two dual gyms digs deep into the slope. Added on top of a two-story parking level, the building appears as a twenty-meter high base structure from the industrial area. Giant lines of supports give a grand atmosphere to the gyms. The load-bearing floor structure takes up the sculptural aspect by exposing an entire series of steel beams. Seen from above, the roof conveys the image of an artificial landscape while also reflecting the power of the main facade.

建筑设计

Architect

Burkard Meyer, Baden/CH

景观设计

Landscape Architect

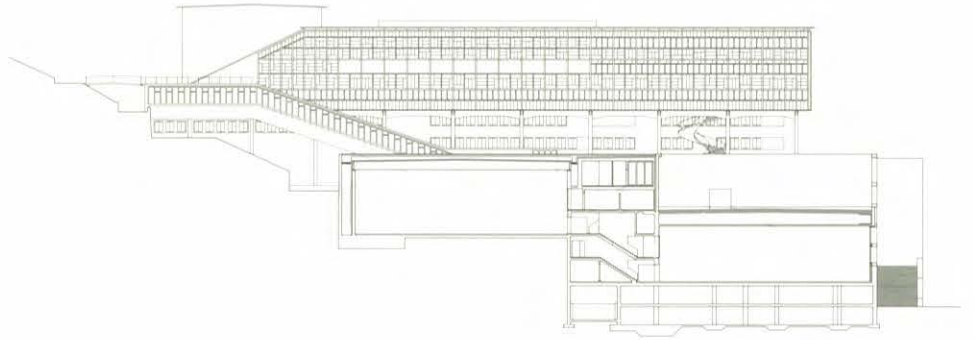
Schweingruber Zulauf

业主

Client

Municipality of Baden/CH





上层大厅的屋顶结构延续了立面的纪念感，粗大的纵向钢梁相邻排列。

剖面图及首层、二层平面图
1:1000
摄影: Erieta Attali

The load-bearing floor structure of the upper gym takes up the monumental character of the facade by exposing giant, longitudinally arranged steel beams.

Section, ground- and 1st floorplan 1:1000
Photo left: Erieta Attali

